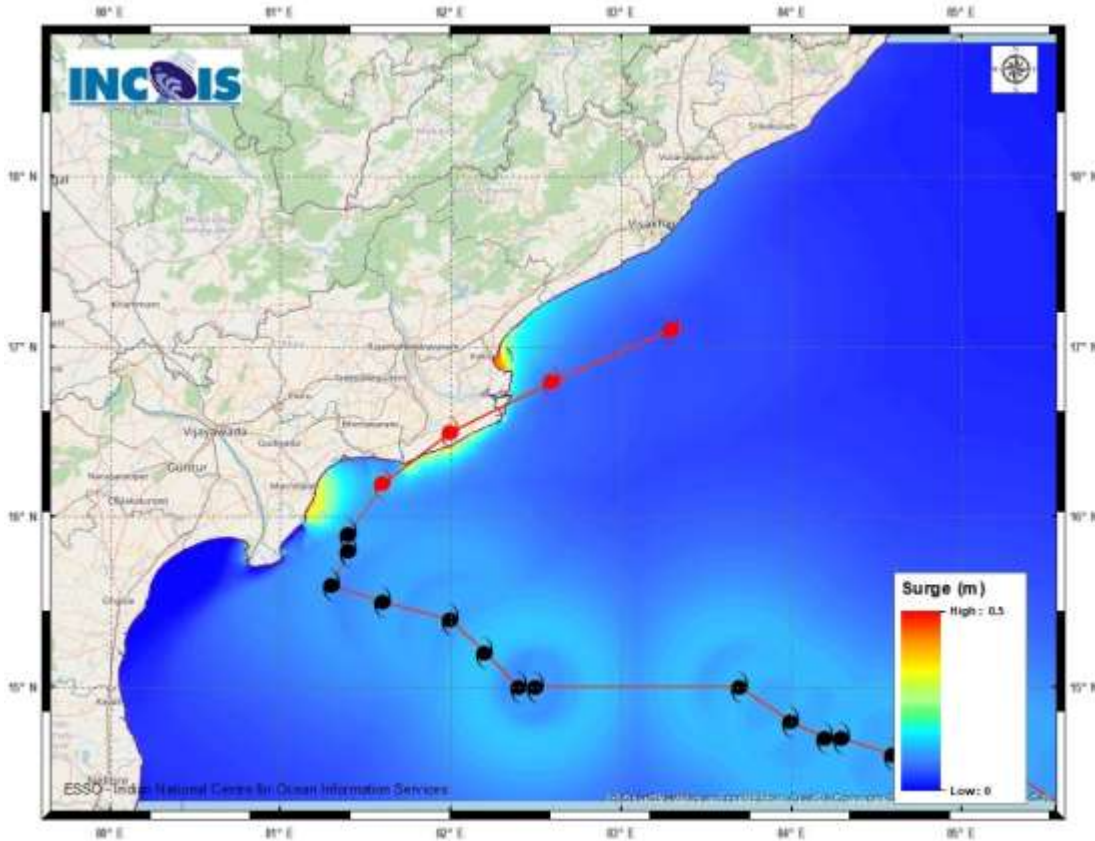


STORM SURGE GUIDANCE BASED ON 0600 UTC OF

11th May, 2022

Storm surge of height about 0.5 m above astronomical tide is likely to inundate low lying areas of Krishna, East & West Godavari districts of Andhra Pradesh and Yanam of UT of Puducherry.



Storm Surge Bulletin from INCOIS

* The below listed surge heights are over and above astronomical tide.

Expected Maximum Storm Surge *	0.5 m near Kakinada, East Godavari, Andhra Pradesh and 0.5 m near Machilipatnam, Krishna District, Andhra Pradesh.
--------------------------------	--